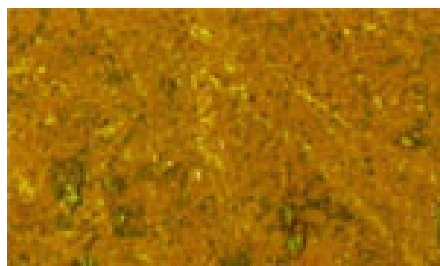


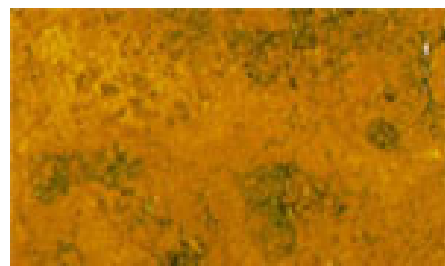
## Standard for overflatefinish



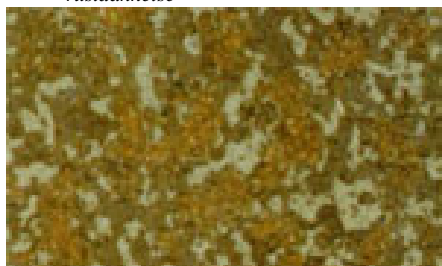
*Basis. Stål med glødeskall og begynnende rustdannelse*



*Basis. Stål med rustdannelse*



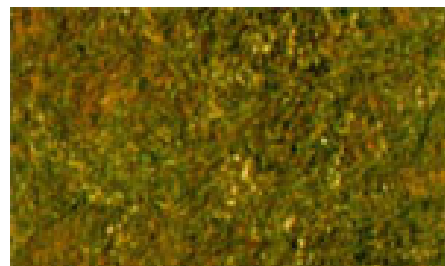
*Basis. Stål med gravrust*



*Stålbørstet (Brush Off)*



*Stålbørstet (Brush Off)*



*Stålbørstet (Brush Off)*



*SA 2 (Commercial)*



*SA 2 (Commercial)*



*SA 2 (Commercial)*



*SA 2,5 (Near White Metal)*



*SA 2,5 (Near White Metal)*



*SA 2,5 (Near White Metal)*



*SA 3,0 (White Metal)*



*SA 3,0 (White Metal)*



*SA 3,0 (White Metal)*